

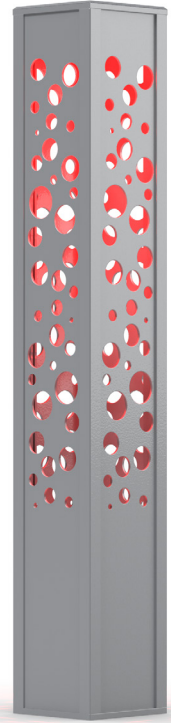
MOSAIC BOLLARD

Illuminating Bollard

.hess

DESCRIPTION

The MOSAIC bollard accents outdoor spaces with dynamic light and a selection of precision-cut decorative panels inspired by nature. The body is illuminated from within by color-changing RGBW or dynamic white sources to create visually interesting scenes, or by static white LEDs for simple ambiance. The bollard may be paired with MOSAIC or MOSAIC MONTAGE columns to make a cohesive design statement to complement site architecture. Finish may be finely textured matte silver grey metallic, dark grey, graphite grey, or black. Special RAL colors and premium anodized finishes available on request. Consult factory for custom panel designs for branding, signage, and waymarking. All hardware is stainless steel. CSA Certified for Wet Locations.



PROTECTED BY

PRIMAR[®]

Date: _____ Type: _____ Catalog Number: _____

Project Name: _____

ORDERING INFORMATION

LUMINAIRE (Luminaire- mounting kit ordered separately)

MODEL	PATTERN	LED MODULE	CONTROL	VOLT	FINISH
MSC1100 43.6"	B Bubble	30K 3000K	DIM 0-10v Dimming	UNV 120-277v	BL Black
	F Fracture	40K 4000K	DMX-RDM* DMX/RDM		DB Dark Bronze
	I Ice Bloom	DW Dynamic White			DG Dark Grey
	N Nautilus	RGBW RGBW			GG Graphite Grey
	P Palm				SG Silver Grey
	R Reed				CC Custom RAL Color
	CP Custom Panels				SA Satin Anodized
			*Dynamic White and RGBW only	BLA Black Anodized	
				BZA Bronze Anodized	

MODEL (Mounting Kit, Ordered Separately)

MSC1100-MK

Mounting kit with 4x ϕ 0.5" x 15" x 3" anchor bolts and paper template

EXPERIENCE
BRANDS[®]

www.hessamerica.com (For other Experience Brands companies, please visit www.experiencebrandsusa.com)
In a continuing effort to offer the best product possible, we reserve the right to change, without notice, specifications or materials. Technical specification sheets that appear on www.hessamerica.com are the most recent ones available.

1/4

Rev 20230714

SPECIFICATIONS

HOUSING

Illuminated bollard is constructed of four panels extruded from 6063-T65 aluminum alloy which are mechanically interlocked to form a square profile. Panel thickness is 0.157". Overall height is 43.6" with nominal square cross section of 6.8". Decorative patterns are precision cut for precise detailing. Light engine is internally mounted below the top of the bollard in downward direct position. Bollard roof with beveled edges is fabricated aluminum and provides tool-less access to the light engine. Flush mounted access cover at base allows access to anchor bolts and connection to power. Mounting base is fabricated from 3/4" thick aluminum plate and features recessed cavities for leveling nuts to minimize gap between the foundation and bollard. All hardware is stainless steel. Consult factory for custom panel designs for branding, signage, and waymarking.

OPTICS

LED engine in static white, dynamic white, or RGBW is centered within the top of the bollard and directed downward to backlight the decorative panels. Static white light engine consists of single chip-on-board (CoB) with reflective optics. Light engine for RGBW and dynamic white consists of a multi-chip single LED source with aluminum core circuit board. The light source is fitted with a high-efficiency spot distribution lens.

ELECTRICAL

Universal LED driver for static white LEDs is mounted in a weather-proof enclosure at the base of the bollard. Input voltage to universal driver is 120v through 277v AC, 50/60 Hz. Maximum power consumption is 15 watts. LED driver supplies 450mA to LEDs.

Universal LED driver for RGBW and dynamic white is mounted in a weather-proof enclosure at the base of the bollard and operates on 120v through 277v AC input. Maximum power consumption is 17 watts. Driver includes dimming control options for pre-programmed color changing sequencing or DMX512-A control capability.

NOTE : Due to rapid and continuous advances in LED technology, LED luminaire data is subject to change without notice and at the discretion of HessAmerica. Consult factory for more current technical data.

MOUNTING

Bollard features concealed fabricated aluminum mounting plate at the base of the bollard. The bollard mounts to four 0.50" diameter x 15" x 3" galvanized steel anchor rods embedded in a concrete foundation by others. Anchor bolts may be pre-shipped in advance upon request.

FINISH

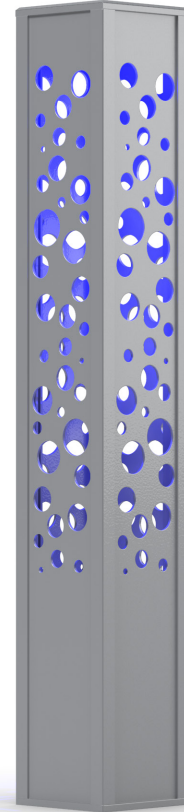
Standard finishes are finely textured PRIMAR™ matte silver grey metallic, dark grey, graphite grey, matte black, or dark bronze. Special colors available on request. Premium brushed and anodized aluminum finishes in clear satin, bronze, or black are also available.

CERTIFICATION

CSA/US Certified for Wet Location pending.

WARRANTY

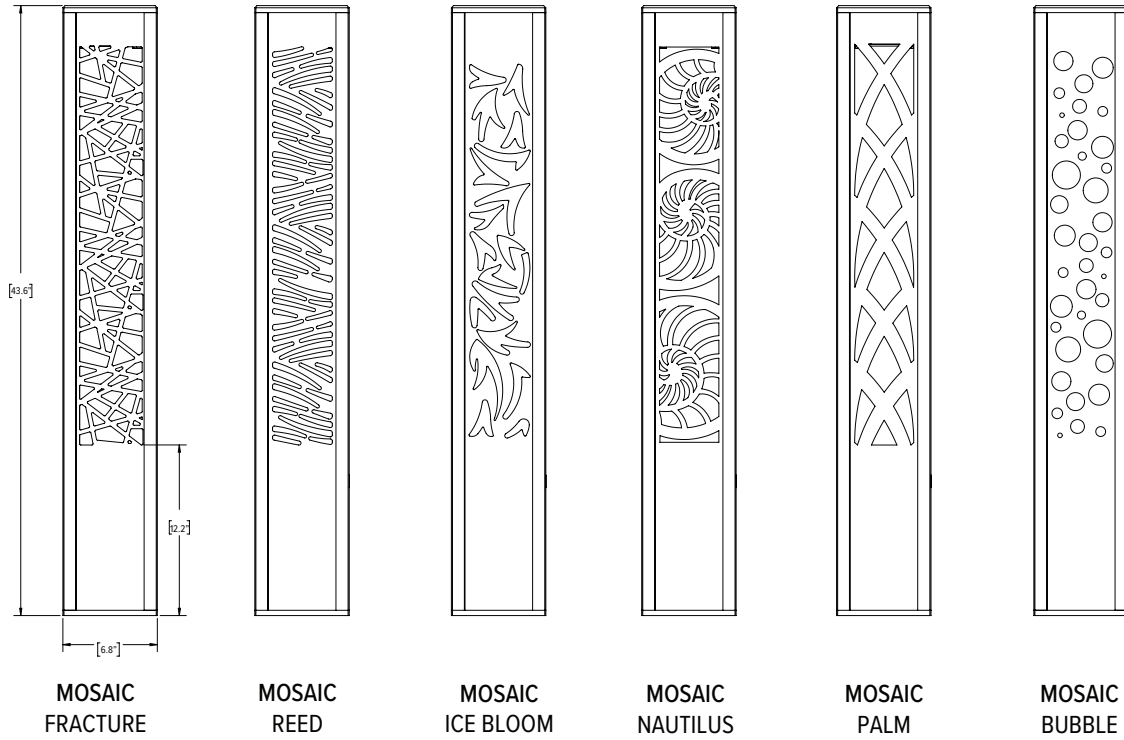
Limited product warranty period including LEDs is five years. Driver shall carry the manufacturer's limited warranty.



Custom signage panel examples

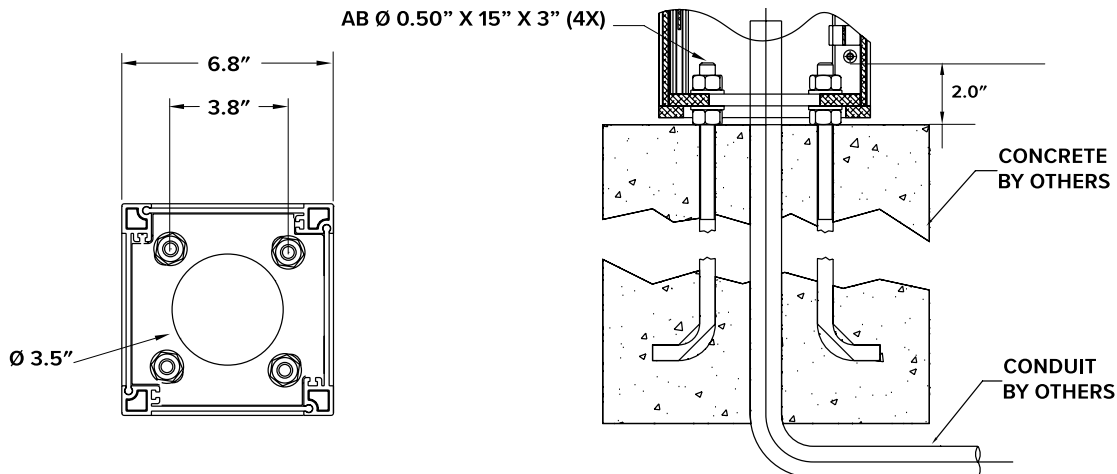
DIMENSIONS

All dimensions are shown in inches unless otherwise noted.



MOUNTING DETAILS

All dimensions are shown in inches unless otherwise noted.

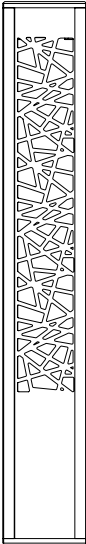


MOSAIC BOLLARD

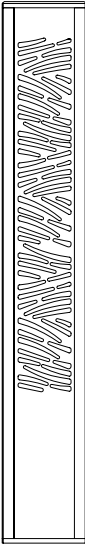
Illuminating Bollard

.hess

MOSAIC BOLLARD MODELS



FRACTURE



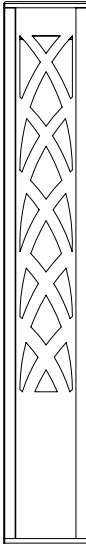
REED



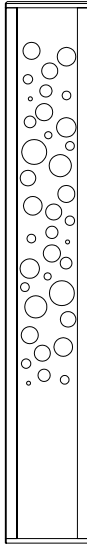
ICE BLOOM



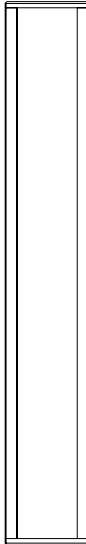
NAUTILUS



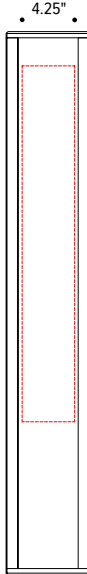
PALM



BUBBLE



SOLID PANEL



DESIGN CANVAS

